

• THE •  
**ADELE**

**THE ASHLAWN**

2 BEDROOMS  
2½ BATHS  
1,673 SF / 156 SM

**RESIDENCE FEATURES**

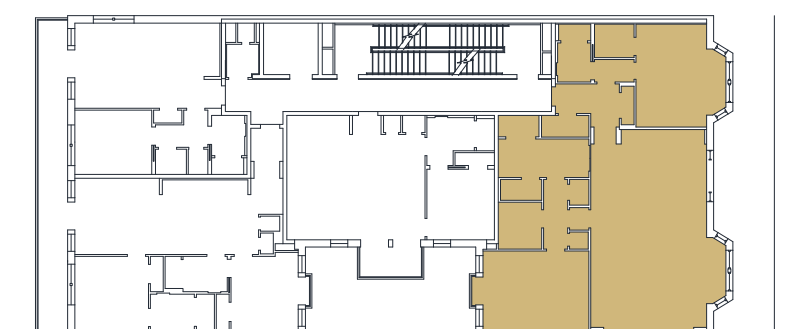
- Additional private rooftop terraces with gas hookup
- Premium flooring - 7½" oak planks with various color palette options throughout
- Woodmode cabinetry
- Bespoke crown moldings
- Custom walk-in closets
- Circa light fixtures
- Customizable smart home technology

**KITCHENS**

- Michael Hampton custom designed kitchens
- Woodmode cabinetry
- Thermador gas cooktop, kitchen hood, wall oven and microwave
- Thermador cabinet panel refrigerator and dishwasher
- Toe kick lighting
- Calcutta gold quartz countertops
- Ann Sacks backsplash
- Waterworks kitchen faucet with handspray

**MASTER BATHROOMS**

- Ann Sacks bathroom floor, shower floor and walls
- Imperial Danby marble countertops
- Woodmode cabinetry
- Waterworks fixtures
- Programmable heated floors
- Expansive walk-in shower and separate undermount tubcabinets
- Private water closet



SIXTH FLOOR

\* Floor plans are artist's renderings and accuracy cannot be guaranteed. All room dimensions and area calculations are approximations. Plans and specifications are subject to change without notice or obligation. This document is for illustrative purposes only and is not part of a legal contract.